



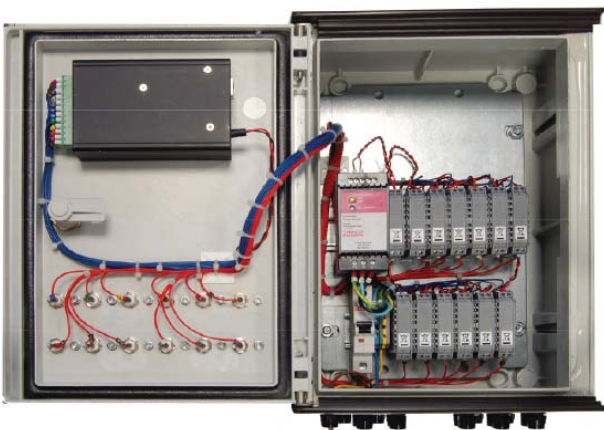
NEPEAN
Power

X5000 MicroController Based Monitoring System



NEPEAN Power is a proven leader in the supply and manufacture of quality engineered solutions, products and technologies. Established in 1994, through the commitment of our dedicated team we have become a supplier of choice.

The X5000 features a 3.5 inch TFT touchscreen with an easy-to-navigate menu that enables users to set data sampling period, alarm threshold levels and delay times on a channel-by-channel basis or across all channels. The system will accept voltage or 4-20mA inputs and can be used to monitor many different types of sensors. AC outputs are available via door-mounted BNCs for easy analysis. Modbus and remote PC monitoring available as options.



Applications

- Vibration monitoring and logging
- Any sensor-based design e.g. temperature, pressure, vibration, torque, voltage/current/power

Technical

Analogue input channels	12
Sampling resolution	12 bit
Sampling speed	Up to 250KHz
Screen	3.5" (89mm) TFT Touchscreen 480 x 320 x 24 bit colour
Sampler buffer	12 x 100 samples
Operating voltage	100-240VAC
Alarms	12 (user-configurable alarm level and alarm delay)
Enclosure	GRP
Dimensions (enclosure only)	350 x 250 x 200 mm
Dimensions (including brackets)	395 x 250 x 200 mm

Options

- Modbus TCP/IP
- PC connectivity for remote monitoring and data logging
- Alarm beacon
- Internal-mounted display and BNCs for IP65 protection

X5000 MicroController Based Monitoring System

Screenshots

Grid Format

MONITRAN			
1: GS-34512 System Motor 1 DE Velocity	14.30 mm/s	7: GS-34512 System Motor 1 DE gE	23.10 gE
2: GS-34512 System Motor 1 NDF Velocity	21.90 mm/s	8: GS-34512 System Motor 1 NDF gF	8.50 gE
3: GS-34512 System Motor 2 DE Velocity	26.30 mm/s	9: GS-34512 System Motor 2 DE gE	21.80 gE
4: GS-34512 System Motor 2 NDE Velocity	27.00 mm/s	10: GS-34512 System Motor 2 NDE gE	21.80 gE
5: GS-34512 System Motor 3 DE Velocity	24.60 mm/s	11: GS-34512 System Motor 3 DE gE	22.90 gE
6: GS-34512 System Motor 3 NDC Velocity	23.60 mm/s	12: GS-34512 System Motor 3 NDC gE	21.30 gE

Grid Plot Meter Bars Info Settings Alarm

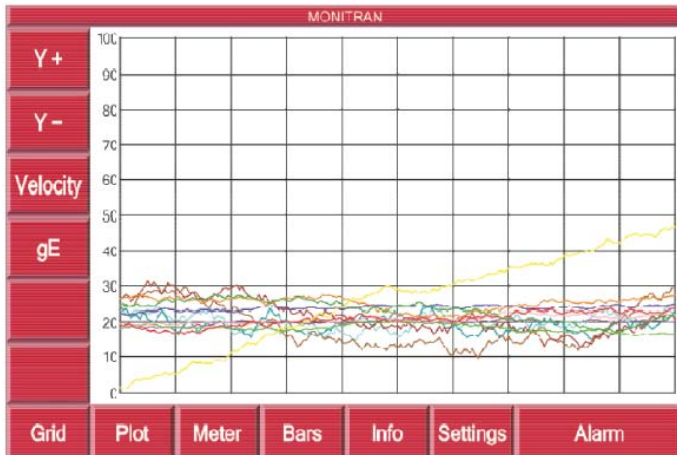
Alarm Setting

MONITRAN	
1: GS34512 System Motor 1 DE Velocity [0-20mm/s]	
Threshold	Current
20.00 mm/s	0.60 mm/s
Delay	Minimum
6.0 Sec	0.50 mm/s
Output	Maximum
0 mm/s	10.20 mm/s
Buffer	Mean
1 Samples	7.30 mm/s

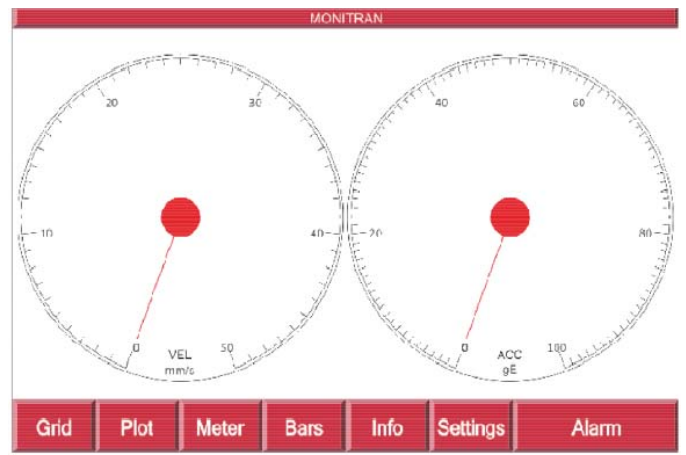
Prev Next

Grid Plot Meter Bars Info Settings Alarm

Plot Screen



Meter Screen



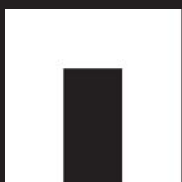
Bar Screen



Information Screen

MONITRAN	
Serial Number	MAC address
507190	00-11-22-33-44-55
Calibrated	IP address
12/08/15	192.168.57.100
Unit ID	Port
001	502
Softwares	Slave ID
1.1.17	2
System	Modbus Registers
MTN/5000-000	40001-40012
www.monitran.com	unsigned integer 16 bit (read)
info@monitran.com	register = screen value x 1000

Grid Plot Meter Bars Info Settings Alarm



NEPEAN
Power

www.nepeanpower.com

For more information please contact:

P: +61 2 4028 5000

E: power@nepean.com