

# Area Lighting



AVAILABLE FROM  
NEPEAN ELECTRONICS

NEPEAN Power is a proven leader in the supply and manufacture of quality engineered solutions, products and technologies. Established in 1994, through the commitment of our dedicated team we have become a supplier of choice.

The NEPEAN Power Area Lights provide robust lighting solutions for a range of industry requirements. Our area lights are suitable for use for both indoor and outdoor lighting applications. These lights offer a low operating power consumption while providing superior luminosity. This design focuses on functionality in harsh conditions with easy installation and low maintenance requirements with a long lifespan.

### Features

- IP65 rated, suitable for use outdoor and in wet conditions
- Aerospace grade thermal composite material luminaire
- Inbuilt 4kV surge protection
- UL listed

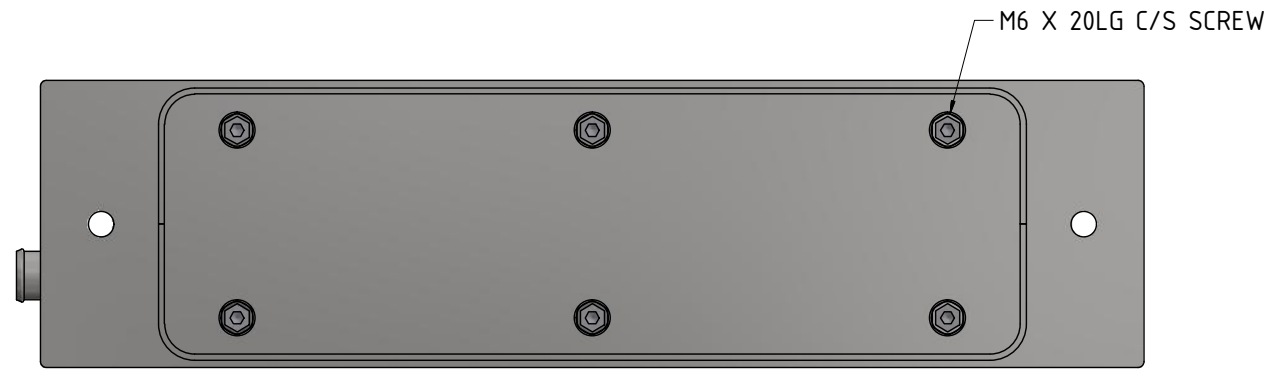
### Technical Specifications

|                        |               |
|------------------------|---------------|
| Frequency              | 50-60Hz       |
| Wattage                | 30W           |
| Lumen Output           | 3600lm        |
| Colour Temperature     | 3000K         |
| Colour Rendering Index | 80            |
| Distribution           | Type V        |
| IP Rating              | IP65          |
| Operating Temperature  | -30°C to 55°C |
| Lifespan               | 50000 hours   |

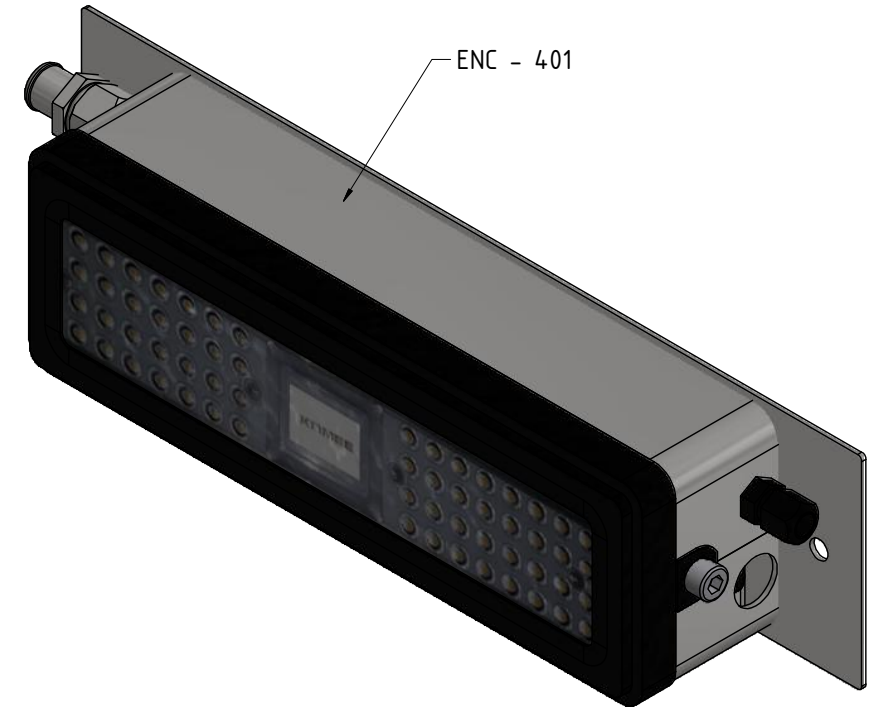
### Ordering Information

| Part Number     | Description                                  |
|-----------------|--|
| KE30-30-NM-BL-1 | 30 Watt LED Light, IP65, 12V DC              |
| KE30-30-NM-BL-2 | 30 Watt LED Light, IP65, 24V DC              |
| KE30-30-NM-BL-3 | 30 Watt LED Light, IP65, 48V DC              |
| KE30-30-NM-BL-4 | 30 Watt LED Light, IP65, 110-240V AC         |
| KE30-30-ME      | Mounting Enclosure to suit KE30-30 LED Light |
| LWC-18-3        | Waterproof Connector                         |
| LWC-23-3        | Waterproof T splitter                        |





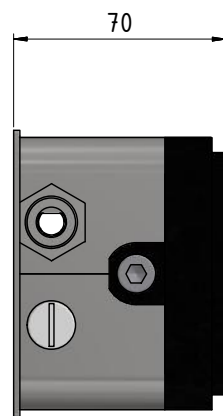
REAR VIEW



ISOMETRIC



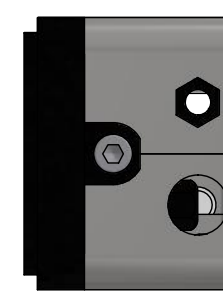
PLAN VIEW



L/SIDE VIEW



FRONT VIEW



R/SIDE VIEW

NOTES  
 1. ALL DIMENSIONS IN mm UNLESS OTHERWISE STATED.  
 2. DRAWING IS UNCONTROLLED IF THERE IS NOT A RED APPROVED STAMP.

| REV | DETAILS | DRN | CHK'D | APP'D | DATE |
|-----|---------|-----|-------|-------|------|
|     |         |     |       |       |      |

| REV | DETAILS     | DRN | CHK'D | APP'D | DATE |
|-----|-------------|-----|-------|-------|------|
| A   | PRELIMINARY |     |       |       |      |

**NEPEAN Power**  
 58 Bonville Ave Thornton, NSW 2322  
 Ph: (02) 4028 5000 Fax: (02) 4028 5096

This Drawing and Design is the property of NEPEAN Power Pty Ltd and must not be copied, loaned or otherwise used without their express permission or licence in writing.

**KOME E**  
 110V/24//48/ 30W IP66  
**LED LIGHT**  
 GENERAL ARRANGEMENT

| SHEET        | DRAWING NUMBER   | REVISION     |
|--------------|------------------|--------------|
| A3           | KOME E - 400     | A            |
| SCALE        | DRAWN Power.CAD1 | ENG CHK      |
| DATE 7/03/18 | DWG CHK G.S      | APPROVED G.S |